

Topic: ICT Systems

FEEDBACK - LOCKERS

The Leadership Group have been speaking to other schools and staff at CBSC who had lockers at their previous schools to ask for their feedback on this too. Having looked into it further, and the amount of students who are interested in using one, LG have decided it is too expensive. As an alternative, LG are looking at ways to make student's bags lighter by having either a second set of text books in school so that students can keep their copy at home (see below for science feedback)

FEEDBACK FROM THE SCIENCE TEAM - PA.

A vote was taken on the use of the new text books and it was highlighted by students that they are NOT using their text books at home, as we use Educake and Tassomai. We have been asked if they are not using them at home can we either keep them at school, or make sure we link the Educake / Tassomai homework to the appropriate pages in their text books - plus set end of topic test using the practice questions at KS3/4.

FEEDBACK FROM MATHS – MS

A second batch of KS4 maths text books have been ordered for the classroom so that all KS4 students can keep their at home, to avoid having to bring the heavy book to school everyday

PARENTS EVENING

The staff survey came back at around 50-50 for/against the early finish rather than a later start. We have to consider the well being of the staff who have to stay late. At the most recent parents evening, we trailed an earlier start to parents evening (4.30 rather than 5pm) to allow everyone to finish parents evening earlier at the time of 7.30pm (originally 8pm). This was well received by most staff. We will also be trialling the early finish on a Friday after parents evening in the next academic year.

CAFÉ FEEDBACK - David

- We have started to make pizza wraps at break time and are now looking at the sausage wraps.
- The smoothies are expensive to buy in but also the cost of raw ingredients is also high more importantly the amount of sugar contained in the drinks are too high for the school standards
- Plans for the café area and extra sitting area are being drawn up now – these will be discussed with POWER as and when possible

BADGES

All reps now have a student council badge. If any tutees missed out, please ask them to see Miss Bishop in E17 office

WIFI

1. **Student WIFI drops out at times in the playground during break and lunch. Do we know why this happens? And if so, can it be fixed or improved?**
 - WIFI is designed to cover the buildings, rather than the playground. There are still some areas outside where you do get a good WIFI signal – when pupils were asked **'where in the playground is good for WIFI?'** they responded with **outside the Hblock**
2. **Can we make it easier to log in to the WIFI? (lots of students have trouble or I doesn't work properly) and would it be possible to have access to Wi-Fi all day? (for the use of Tassomai)**
 - Leadership decision to not have WIFI on all day – students need to have a break and we also do not want phones going off during lesson time
 - To make it easier, we would need to give every student a password, which can have a negative impact on the security of our network, and therefore, the IT team are limited in way they can change/adapt the current system
 - To ensure everyone has a safe environment in which to work, we need to be able to track who is logging in to our network
 - If you are having difficulties accessing WIFI (staff and student) on your device, please go to IT support (Hblock) who are more than happy to help
 - Once you are connected, you should not have to reconnect for 3 months
 - Mr Brittain has also changed the timings for break/lunch to ensure they come on at the very beginning of break and lunch etc. so this should be more efficient – again, any issues, please see IT support

SOFT/HARDWARE

1. **Are there any plans to update our tech? we would like to see some 3D printers, 3D scanners, Arduino boards etc. so we can start building our own projects.**
 - DT department have been adapting their projects to save money and have now got enough to order three 3D printers (FlashForge 3D Printers). These are on the way and should be here in the summer term
 - Departments are restricted by funding, but the DT team are looking to make even more savings and are looking at getting dual extruder ABS printers to use with Onshape projects (now on RMuify).
2. **Would it be possible to update the Chromebooks as they can be very slow? AND Would it be possible to purchase more and upgraded iPads? For using in lessons where PC access is limited**
 - We will not be investing any more money into iPads as we do not get enough out of them for the cost (single user devices whereas Chromebooks can be multi-user). We do get a lot of use out of the Chromebooks and are used in lessons regularly
 - £30,000 has been spent on repairing and replacing damaged equipment
 - **REP QUESTION: Could we have a sign in and out system like they have in Maths for science? This might help prevent damages or identify who is responsible – Mr Brittain and the rest of LG will be looking into improving the systems for signing in and out Chromebooks and IT equipment**
3. **Will we be updating the OS on the school PCs? Could we upgrade the computer system to Windows 10?**
 - IT support are ALWAYS reviewing this
 - Time has to be given to allow staff and students to update their systems at home and get use to the new OS
 - New systems can also contain a lot of bugs and prevent applications from functioning as they should
 - Some students shared their experience with Windows 10 and there were mixed reviews. IT team will be reviewing this regularly over the next 2 years.

Topic: ICT Systems

- 1. Could computers or laptops be available for rent? Particularly for Y11/Sixth Form students who may not have a computer at home OR Could we have an iPad scheme to rent or eventually purchase them, so that we could use them in lessons like some other schools do?**
 - Looking into a buying scheme – students may take more care over them – This will discuss with the governors
 - Chromebooks are more cost effective than iPads –when asked in the meeting around 60% of students were keen on purchasing a Chromebook for around £200
- 2. Can pupil printing budget be increased? – we are getting a lot of homework that requires printing and it is sometimes not possible to print it all in one day.**
 - Yes - £1 a day for lower school suggested by Mr Brittain
 - POWER were also asked to encourage their teachers to avoid printed tasks and to use SMH or Google Drive/Classroom for submitting work and to feedback digitally rather than printing every piece of work
 - KS4/5 get a higher print budget already
- 3. PDFs on Show My Homework don't open, is there a way of fixing this?**
 - IT support will look into why this happens
 - In the meantime, students should download the file, click on the small arrow to 'show in folder' and open the PDF from their downloads folder (see picture on the next slide)
- 4. Is there any way we can reset our Educake passwords as they are impossible to remember?**
 - Unfortunately the science team cannot reset/rename the username but CAN reset passwords. Students must speak to their science teacher if they need to reset/change their password

BROKEN EQUIPMENT

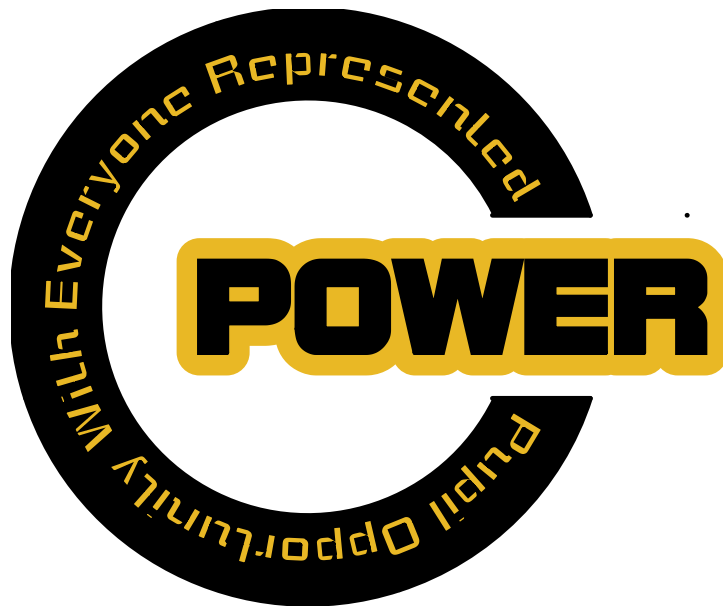
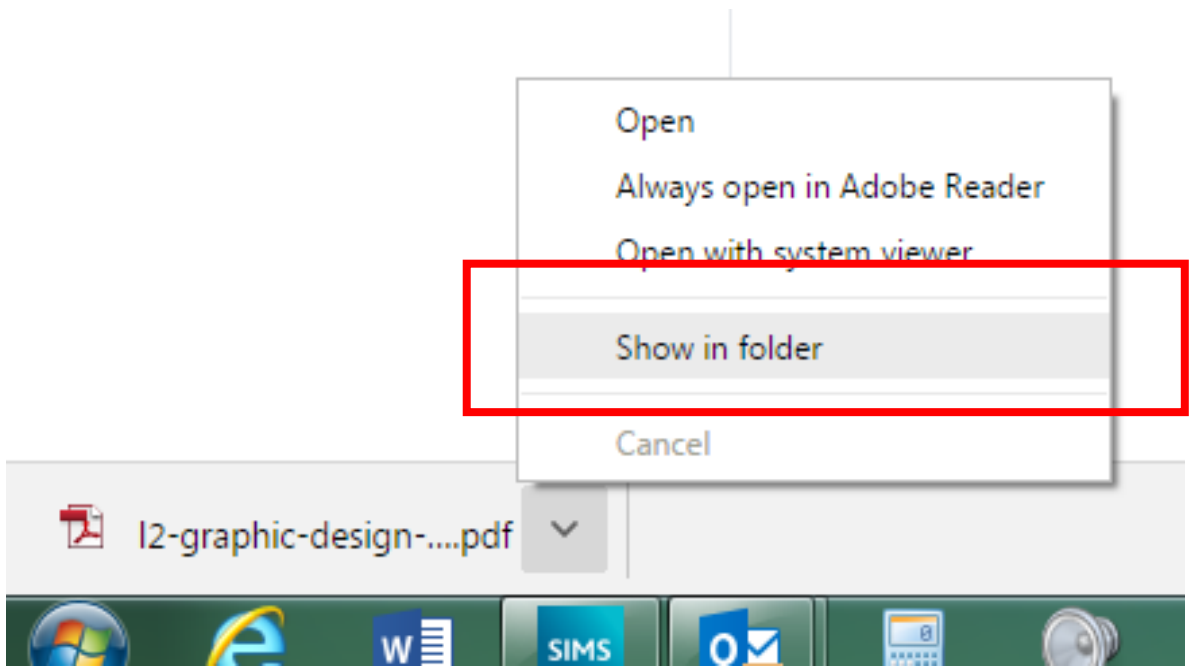
- 1. Could there be a more effective way to report vandalised Chromebooks/PCs and broken Ethernet ports?- could a student IT support email be set up to quickly report damage to?**
 - Yes. IT support email can be used by all students to report any issues/damages themselves - itsupport@carshaltonboys.org

SPACE

- 1. Can there be additional places to print work out, particularly on Thursdays and Fridays when DT is closed for Tech catch up?**
 - We have a limited number of printers in school
 - Students can still use the DT suite before and after school EVERYDAY
 - HCB to discuss a 5 minute printing drop in on Thursday and Friday with the DT team – please await announcements on trial period
 - **REP QUESTION: can we review the cost of colour printing? Maybe to 10p?** – Mr Brittain referred back to the previous question on printing and encouraged students to keep their work digital, however PB and the IT team will look into this.
- 2. Could the Hzone remain open for longer at lunch? Rather than closing at 1.30? Could the Hzone also be open at break time?**
 - Yes. We can keep it open until 13.35 however, it needs to be closed then to ensure staff have time to use the bathroom and prepare for their next lesson
 - Breaktime is closed to ensure staff have time to prepare and set up. Proposed to have 6th form staff on duty. This will be discussed with LG and the IT team
 - Break time should also be time for students to have a break!
- 3. H Block/E17 is often really packed in mornings/break and lunch times and people not always working. Are there any plans to open one large suite per department? Or have support staff or 6th formers policing students who are incorrectly using equipment?**
 - We are really proud of the IT facilities we have
 - Expanding will create huge costs so this will need to be looked at on a longer term basis
 - We will look into 6th form students to police the IT zones at peak times (AM and Lunch?)
- 4. Could computer rooms start lending out headphones? And mice for the Chromebooks as the track pads are frustrating to use?**
 - Mice – could cause a cabling and financial issue (has been looked at before) – lost of mice are already vandalised in both the Hzone and E17.
 - At the beginning of the year, 200 headphones were purchased for the Hzone, there are now 6 left. All have been stolen or vandalised
 - School policy = No headphones. Very occasionally (or in specialist subjects like Music and DT) headphones are used for tutorials or to listen to a piece of music – students were advised to bring in a cheap pair of their own
 - DT have a class set of 30 good headphones that they use for DT students to complete tutorials and SMH quizzes. They have kept them in good condition and in the 2 years of having them, only 1 set has gone missing and 1 set has been damaged
 - **REP QUESTION: Could music invest in better headphones as it can be very difficult listening to anything on the current ones?** – Miss Bishop has spoken with Ms Patel who is going to come and look at the DT set and how we monitor them to prevent damage etc.
- 5. Could we have designated spaces for year groups or key stages? E.g. S03/4 be used for Y7/8, E17 KS4/5 and Hzone KS4/5?**
 - This idea was liked by all staff in the room. To be discussed with HODs/leadership on how to best place Key Stages

EXTRA CURRICULAR

- 1. Can we have an after school computer club to learn different apps? OR programming languages? OR Adobe Suite?**
 - Fantastic idea. Staffing could be an issue. Will look into it for the next academic year
 - In the meantime, ALL staff are happy to support students using any software relevant to their subject. Students should arrange training/seek advice from their class teachers



Thank you to all the students and staff involved in creating questions to be discussed at the POWER meeting. Information on the next topic will be sent out over the next few weeks to all staff to discuss with their tutees. Feel free to use the POWER suggestion box (located on the left side of reception) to suggest any ideas you would like to put the student council. ALL ideas welcome.

